



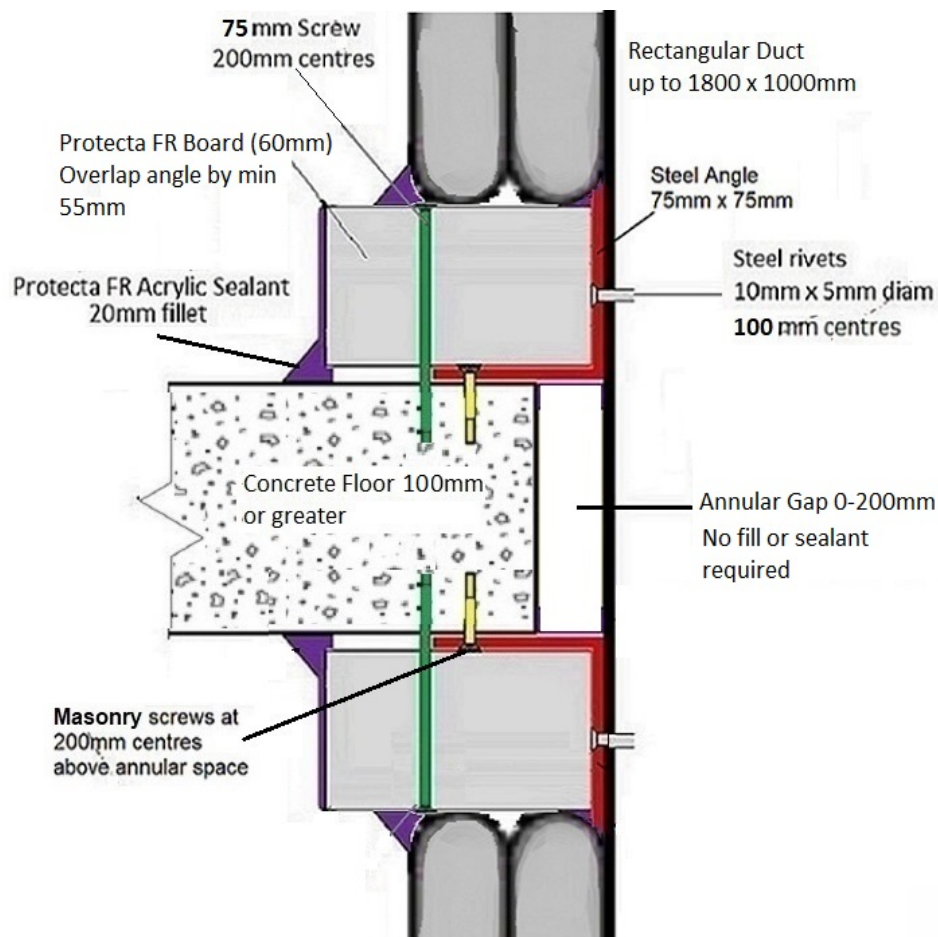
FIRESTOP CENTRE

Authorised New Zealand Distributor
Ph (09) 483 4000 www.firestopcentre.co.nz

FIRESTOP Duct Wrap-38 Rectangular Duct (up to 1800 x 1000mm) Concrete Floor (100mm thick or greater) Internal or External Fire

INSTALLATION INSTRUCTIONS

1. Aperture may have an annular gap up to 200mm
2. Sealants permitted for this system are Protecta FR Acrylic or FIRESTOP Ultra. Either may be used.
3. First apply a bead of sealant to the duct and the floor prior to attaching the angle.
4. Attach 1.2mm thick steel angle 75mm x 75mm top and bottom of the floor if the annular gap is <30mm. If annular gap >30mm, construct lengths of angle from 2mm thick steel. One side of the angle to be 75mm and the other side to be long enough to overlap the floor by at least 45mm.
Fix to the duct with steel rivets 10mm x 5mm diam at max 100mm centres.
Fix to the floor with masonry screws (min 32mm) at max 200mm centres high enough to clear the annular space. Ensure a fixing at max 50mm from each end of an angle section on both floor and duct.
Apply sealant to any joints or corner gaps.
5. Apply a bead of sealant to each face of the angle.
Construct a collar from Protecta FR Board (60mm 2-S) wide enough to overlap the angle by at least 55mm. Fix to the floor with 8-10g x 75mm screws with penny washers at 200mm centres (passing above the steel angle). Ensure a fixing at max 50mm from the end of each collar section.
6. Fill any joints in the collar with sealant. Then apply a 20mm sealant fillet at the floor/collar joint and the duct/collar/angle joint. Finally cover the exposed cut edges of the collar with sealant or Protecta FR Coating.
7. Install the Firestop Duct Wrap layers as specified and apply a sealant fillet at the wrap/collar junction.



FireTS Lab

Report AR23108, Pages 8, 22-24, 25-29
AS1530.4-2014 AS4072.1-2005

System ID# FC284

Products	FIRESTOP Duct Wrap-38 Protecta FR Board Protecta FR Acrylic or FIRESTOP Ultra
Application	Fire stopping of rectangular duct penetrating a concrete floor
Construction	Concrete floor slab min 100mm thick

Fire Classification

NOTE: For general instructions on installing FIRESTOP Duct Wrap-38 see [Installation Instructions](#) sheet on Firestop Centre website.

FRR 60/60/-

Below floor single layer wrap
Above floor single layer wrap

FRR 60/60/30

Below floor single layer wrap
Above floor single layer with 900mm second layer

FRR 60/60/60

Below floor double layer wrap
Above floor single layer wrap with 1900mm second layer. For ducts above 800x800mm (or equivalent area) add 900mm third layer

FRR 120/120/120

Below floor double layer wrap
Above floor single layer with 2100mm second layer and 1700mm third layer

NOTE: Floor systems are tested with fire from below the floor. Where floor FRR is less than above reduce penetration rating to match the floor.

As a part of our policy of on-going product development and testing, we reserve the right to modify, alter or change product specifications without giving notice. All information contained in this document is given in good faith and is provided for guidance only. Any drawings provided are for illustrative purposes only. As Firestop Centre has no control over the methods or competence of installation and of prevailing site conditions, no warranties, expressed or implied are intended to be given as to the actual performance of the product mentioned or referred to herein and no liability whatsoever will be accepted for any loss, damage or injury arising from the use of the information given.



FIRESTOP

Firestop Centre Ltd
657 Great South Road
Penrose, AUCKLAND